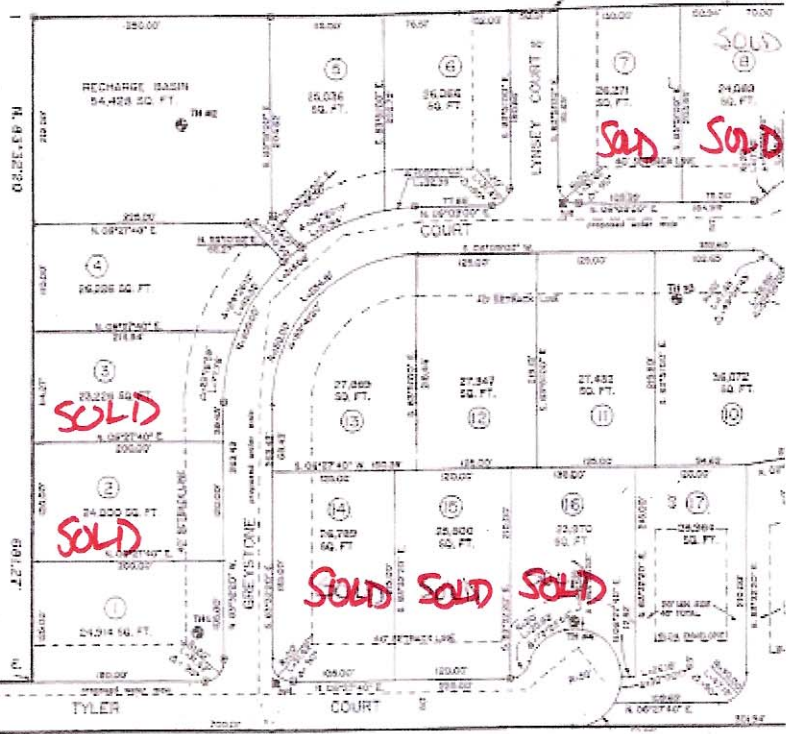
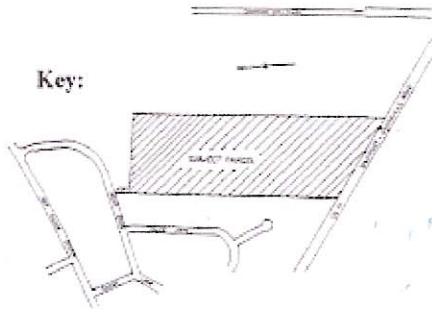


**HIDDEN RIDGE @ MANORVILLE**  
**18 LOT SUBDIVISION**



**SOLD**  
**(9)**

Directions to Hidden Ridge -  
 Manorville: I-16 to Exit 70-South  
 "County Rd 111" Approximately  
 1/2 mile, right on Chapman Blvd.  
 Left onto Hot Water St, Approximately  
 1/2 mile to Ricky Road and make Left.  
 Left on to Tyler Court.



**CAMPO BROTHERS (631)**  
 WEBSITE: [www.campobros.com](http://www.campobros.com)

- Basic lots 1,6,7,13.
- Premium lot 10,000 2,3,14.
- 15.000 lot 4,5,12,15
- 25.000 lot 8,11,16.
- 30.000 lot 9,17.
- 35.000 lot 18.
- 50.000 lot 10